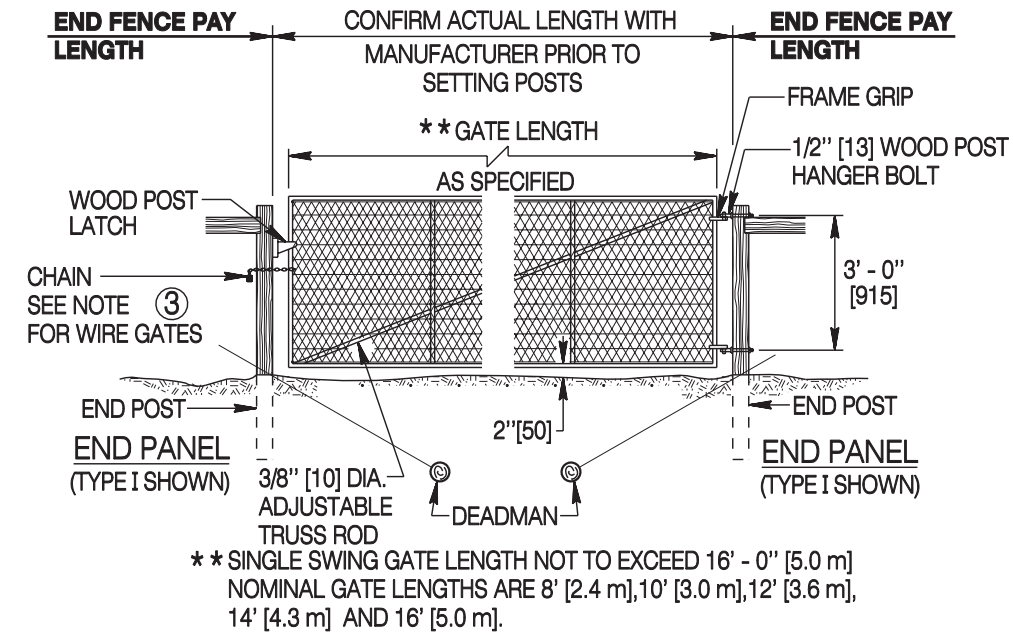


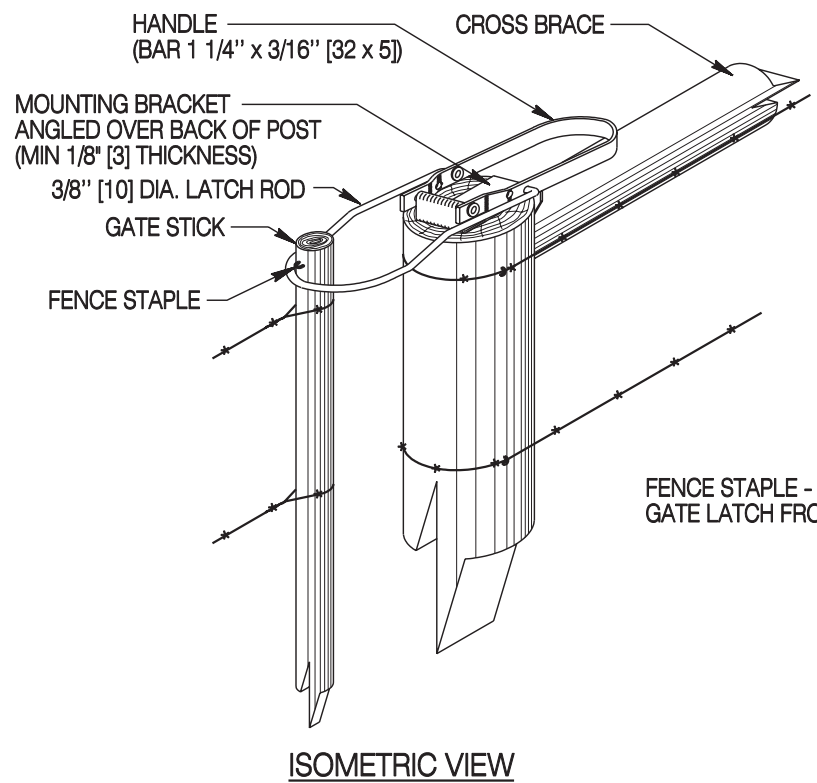
**WIRE GATES**

- 1 GATE STICK**  
Provide wood gate sticks with a minimum cross section of either a rough dimension 2 in. x 2 in. [50 x 50], 1 1/2 in. x 3 1/2 in. [40 x 90] (nominal 2 in. x 4 in. [50 x 100]) or 2 1/2 in. [65] diameter. Extend the stick 1 inch [25] below the bottom strand of wire and 2 inches [50] above the top strand of wire.
- 2 GATE HINGE**  
Staple to gate stick and to the end post. Use 3 per gate.
- 3 GATE CHAIN**  
Provide 3 foot [915] long galvanized chains where required with 1/4 inch [6] diameter welded links. Secure to end post by wiring or stapling.
- 4 GATE SUPPORT**  
Secure to the end post leaving a loop big enough to encompass a gate stick.

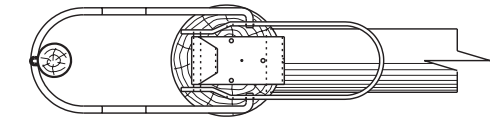


**GALVANIZED STEEL GATE**

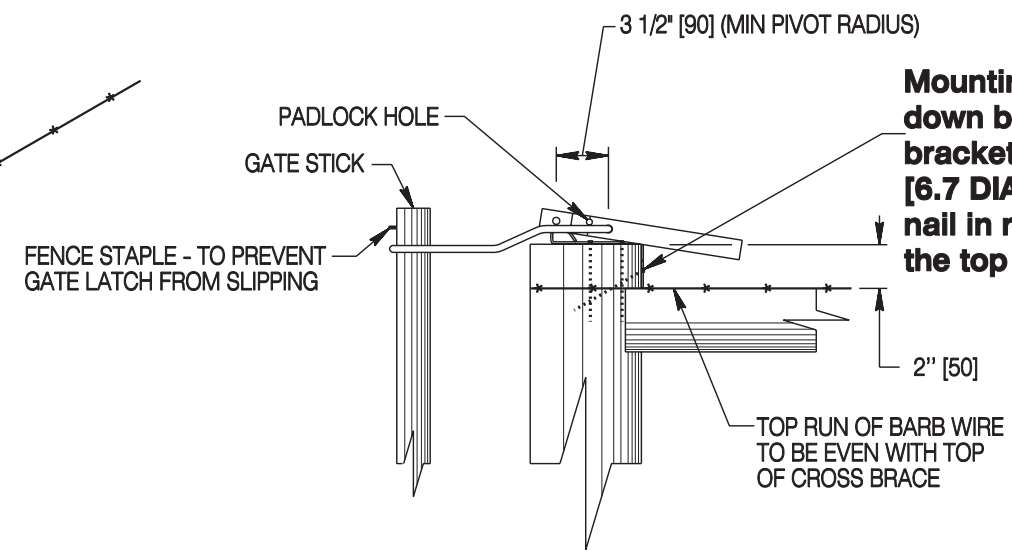
\*\* SINGLE SWING GATE LENGTH NOT TO EXCEED 16' - 0" [5.0 m]  
NOMINAL GATE LENGTHS ARE 8' [2.4 m], 10' [3.0 m], 12' [3.6 m], 14' [4.3 m] AND 16' [5.0 m].



ISOMETRIC VIEW



TOP VIEW



SIDE VIEW

**TYPICAL GATE TIGHTENER**

Shop paint gate tighteners. Use alternate tighteners only when approved by the engineer. It will be the sole discretion of the engineer in determining whether alternate gate tighteners are of equivalent strength, functionality and durability.

Designed by: WBW  
Drawn by: GLD  
Checked by: WBW  
Previous Dwg. No. 607-1

**WIRE GATES AND GALVANIZED STEEL GATES**

Note: Units shown in brackets [ ] are metric and are in millimeters (mm) unless other units are shown.



**WIRE FENCE**  
STANDARD PLAN

STANDARD PLAN NUMBER  
**607-1A**  
SHEET 5 of 6  
Issued by: ENGINEERING SERVICES  
Date Issued: DECEMBER 2006